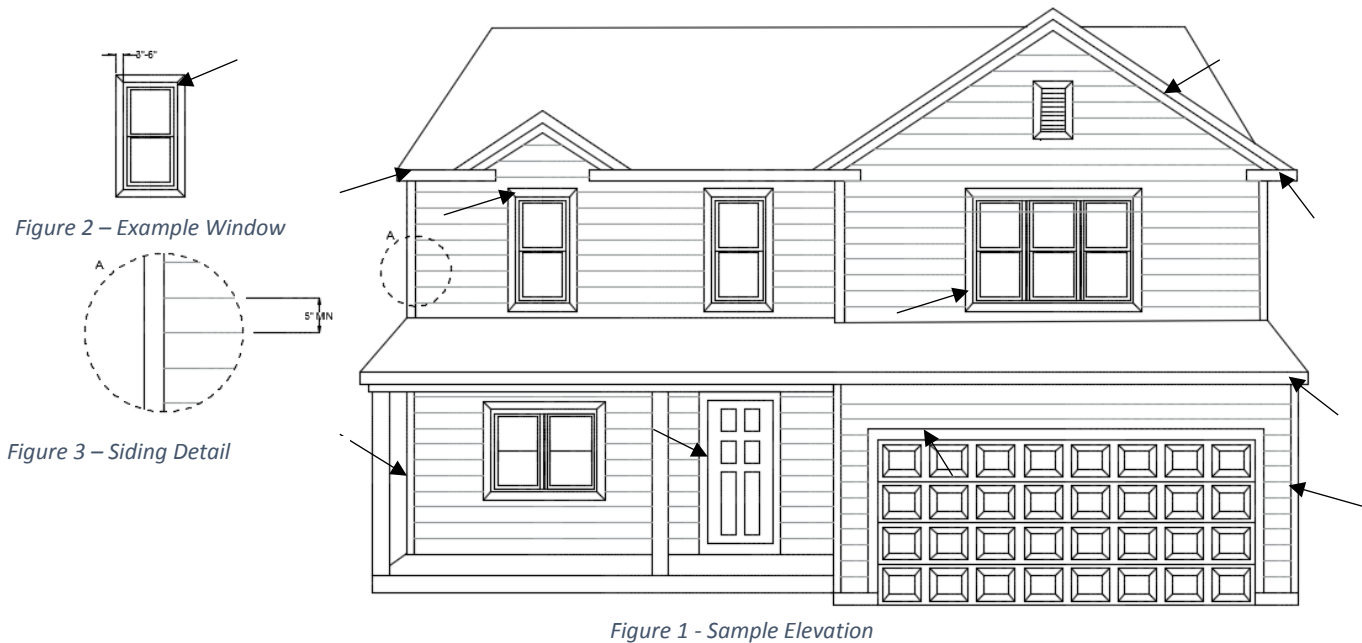


# Decora Park Home Owners Association

## Exterior Siding and Trim Architectural Guidelines



All exterior aspects of homes in the Decora Park Home Owners Association are controlled under adopted rules, standards and guidelines. Any changes to exterior of the home from existing or original finishes must be approved by the Board of Directors by means of a modification request.

This document is consider a guideline for seeking approval for exterior modification requests and new construction regarding exterior trim. The following guidelines apply:

1. All windows, entry doors, garage door, edges, eaves, peaks, corners, porch posts etc. must be trimmed with a 3" minimum width trim board.
2. Per the Decora Park Exterior Color Standards, all trim must be white in color.
3. Trim board material may be wood, vinyl, aluminum, cement board, or composite.
4. Siding overlap width must be a minimum of 5". See figure 3.
5. Siding colors must be approved per Decora Park Exterior Color Standards.
6. Siding material maybe vinyl or cement board.

Any modification or new construction must be approved by the Board of Directors by way of a modification request.

This specification includes a grandfather clause, whereas any existing structures before the adoption date will not require change to adhere. However, any future modification to existing structures will be subject to this standard guideline.

Date Adopted: 7/21/2017

Rev. 7/21/17